



Dear Parents/Caregivers,

WELCOME

We welcome to our St. Mary's School community—Scarlett Deller. With open arms, minds and hearts we accept her into our community and pray God's blessings on her.

New Drop Off/Pick Up Arrangements

Thank you parents/caregivers for your support of this initiative and for walking your children onto/off the school site (or organising a pick up point at a distance from the school) This has considerably reduced student safety and road congestion issues. On wet days, those students who have not been picked up, will wait to be collected under shelter at the Activity Room. We ask that should your child need to cross the road as you drop them off, that they walk up to and use the school crossing to do so.

'Dad's Club' Initiative

We are very keen to trial a 'Dads Club' possibly operating one or two days per week. This would see Dads having a presence on the school field during the lunch hour and be involved in running/refereeing an informal game of soccer, cricket or touch rugby etc or, even reading books with students in the School Library. We believe that this would give our Dads an opportunity to be involved in everyday school activities. This may appeal not only Dad's, but possibly Granddads, and uncles. If you are able to offer your support, please indicate on the form below and return to the Office.

St. Mary's School Community Support Group

Our Support Group provides confidential Pastoral Support to those in need within our School Community. It is a dedicated group of parents who offer care to families where there may be stress, illness or tragedy. The care is offered in a practical way with the baking of a cake/biscuits/casserole etc. We have tremendously positive feedback from families who have been recipients of this group. We would ask you to seriously consider becoming part of this group – you may be called on only once or twice per year at the maximum. Please help us to give support to those in need, within our school community. We look forward to your response. If you are able to help, please indicate on the form sent home and return to the Office.



Parent Maths Evening with Dinah Harvey—Thursday 29 March.

Book this date now! Dinah Harvey the Maths Facilitator from AdvisorsPlus will be presenting another informative Parent Maths Evening later this term where she will outline strategies for parents to use to assist their children with their maths learning at home. These sessions are immensely popular and we have great feedback from those parents who have attended in the previous two years. If there is anything in particular that you would like Dinah to speak to at this meeting, please indicate on the form below and return to the Office. We look forward to a great evening!

2012 New School Stationery Arrangements

We would like your feedback on the new arrangements we had in place this year, with a view to streamlining processes for 2013 where necessary. We are aware of some late deliveries for some parents who ordered online and have already passed this on to Office Max. Please comment on the form below and return to the Office.

Children's Mass.

This Sunday, 17 February, 2012, at 9.30am, at Sacred Heart church, the Pastoral Area of Hastings celebrates a Children's Mass. All children are invited to this Mass and some may wish to be readers at this Mass. Please let me know by Wednesday. Thanks. **Teresa Neilson D.R.S.**

Catholic Character

Thank you to all those families who attended our Beginning School Mass at St. Peter Chanel yesterday. Thank you to the staff and Board of Trustees who also attended the Mass. Our school leaders accepted the challenge of being the lectors at Mass and did that ministry well. At St. Mary's all children are given the opportunity to read at the Masses they attend in our chapel, Madonna Maria, on Fridays.

At St Mary's, I am the Director of Religious Studies. This means I have a Senior Management responsibility to ensure that the Catholic Character of our school is enhanced and maintained. I also assist the teachers in the teaching of Religious Education. Please feel free to contact me at anytime about any matter of concern or interest to do with our Catholic School. I am passionate about our Catholic Faith and will willingly listen to and support our families in matters of Faith. God bless you all. **Teresa Neilson D.R.S.**



Religious Education.

Every family should have a Family/Whanau book to assist parents with the Religious Education Curriculum. Its time to find this book, dust it off, and give it a read. It is a useful book in helping your child understand and appreciate their learning about God and Catholic teachings and practice. The children begin learning from the God Strand this week so please read the pages relevant to your child's learning. At the back of the book are the traditional prayers of the Catholic Church which will help families with their prayer times. **Teresa Neilson D.R.S.**

Weetbix Triathlon

We thank Mrs Nora Dunphy and Mrs Donna Marie Anderson for their huge commitment and drive which has resulted in **52** students entering this weeks competition at Frimley Park. Thanks also, to those many parents who have also offered to act as marshals' on the day. We wish all our students the best for the day as they swim, run and bike around the course at Frimley Park.

Date: Wednesday 15 February

Venue: Frimley Park

Time: 9am start

Music - Keyboard Enrolment

Beginner keyboard lessons are offered at St Mary's School on Mondays, available for those in **Year 4** or older. Half hour lessons take place during the school day, children are in small groups of 2, 3, or 4. Phone Theresa Bevin 8441020 for enquiries. Please enrol /re-enrol early so that a timetable can be organised. First lesson February 13.

Cost: \$ 75. 00 per school term.

\$98.00 (groups of two)

Materials charge is extra.

We have vacancies for Year 4 children. Please contact the office for an Enrolment form.

HERETAUNGA INTERMEDIATE MUSIC CENTRE

Heretaunga Intermediate has established a programme whereby children can receive instrumental tuition before they reach Intermediate. In most cases the child would need to have their own instrument. The cost is approximately \$165 per year. Tuition is available in clarinet/saxophone, trumpet, trombone, violin, cello and flute. For more information please phone Ngaire Shand on 876-9388. Application forms are available at St. Mary's office.



Week 3 Happenings at St. Mary's...

Monday	Home & School Meeting—7.30pm Staff Room All welcome
Tuesday	School banking collected today. Dog Safety visit R 7-15.
Wednesday	Assembly, Weetbix Triathlon—Frimley Park; BOT mtg
Thursday	Tech Arts begin. Parent Meeting Yr 5/6 camp 7pm school
Friday	Mass R. 4,5 and 6 RNZAF concert Yr 7 & 8; Aquarium visit R 14 and 15.
Sunday	Children's Mass, 9.30 am Sacred Heart Church, Heretaunga St East, Hastings.

SAUSAGE SIZZLE

Thanks to our new parents for signing up for this roster Funds raised assist with camps, bus trips and cultural shows. If you are able to assist with cooking sausages once a term on a Friday, please complete attached reply slip. Normally takes 1½ hours and involves picking up supplies from Mad Butcher in town. Thank you.

Helpers for the next two Fridays are :

Friday 17 Feb— Val Healing and Simon Collins
Friday 24 Feb—Kelly Harvey and Deanna Herbert.



TENNIS COACHING

Forms at the office. \$30 per pupil—5 lessons. Minimum age 8 years. Coaching starts Wednesday 15 February.

GIRLS WINTER PINAFORE

If your daughter is likely to need a new winter pinafore this year please come to the office and order before the end of February. Supplies take 8 weeks to arrive in time for winter uniform changeover in May.

Senior Buddies

Congratulations to our Senior Buddies for 2012! These students have an important role in supporting our New Entrant students as they start school.

Feedback from New Entrant parents indicates you are doing a superb job. Well done!



Team Newsletters

Team Newsletters are issued with today's Newsletter outlining Learning Programmes for the term for your child. Team Leaders, would be happy to discuss any questions you may have regarding these.

RNZAF Central Band Concert

On **Friday the 17th of February** the senior students will be attending a concert by the 65 member Central Band of the RNZAF at the Napier Municipal Theatre. The special concert for schools, is both entertaining and educational and offers a rare opportunity for pupils to enjoy a live performance, displaying a wide selection of musical instruments and genres.

The Central Band is the only full size, professional Symphonic Band in New Zealand, and features all woodwind, reed, brass, a double bass and percussion instruments as well as a corps of drummers. In addition, a drum kit and vocalist means that music performed ranges from classical through to jazz and pop music.

Important Upcoming Events ...

Week 4	Burning Palms Liturgy People Saver Course Yr 7 & 8 Triathlon—middle block Ash Wednesday Liturgy Yr 2-4 Swimming Display Mass R14, 15. Rocky Shore R 14 and 15	21 Feb 20-22 Feb 21 Feb 22 Feb 23 Feb 24 Feb 23 Feb
Week 5	Camp Akitio R5 Camp Akitio R 4 Camp Akitio R 6 Ocean Spa 7 Camp Arataki R9 Mass R 1,2,3	27-29 Feb 29-2 Mar 1-2 Mar 1-2 Mar 1 Mar 2 Mar
Week 6	New Parent Evening—7 pm Mass R 4,5,6	7 Mar 9 Mar
Week 7	Mass R 10, 9 & 7	16 Mar

CAUGHT BEHAVING INTELLIGENTLY AWARDS

R.1,2,3.

R 4,5,6.

Samuel Thompson,
Alex Kerrisk, Grace
Mentzer,

Sophie Haronga,
Shemaiah Tere, Paige
Flashoff

R. 10, 9, 7

Claudia Vignolini, Alice
Thomas

Jaimee Gregory, Lucia
Urquhart.

R 15, 14

Lani Daly

Congratulations everyone. We are thrilled to see you making such positive and intelligent choices.



TERM DATES FOR 2013

Term 1—Mon 30 Jan—Thur 5 April
Term 2—23 Apr—29 June
Term 3—16 July—28 Sept
Term 4—15 Oct—19 Dec approx.

RUGBY CLUB REGISTRATION FORMS

These have been given out today.

SOCCER CLUB REGISTRATION

Western Rangers Junior Football/Soccer Club

are accepting registrations for the 2012 season at the Western Rangers Clubrooms, Francis Hicks Ave, Hastings on the following dates:

Sunday 26th February 10am-11.30am

Saturday 3rd March 1pm-2.30pm.

Previous and new players welcome, boys and girls..

Enquiries phone Kylie Cheer 8703903 or Carla Lucas 8785357

or email kyliecheer@xtra.co.nz



BOY'S SIZE 6 NEW JERSEY FOR SALE - \$40

Phone Lisa on Ph. 878-0088.

Hawkes Bay Junior Cricket

We are very grateful to the following parents who are coaching our cricketers this term; Grant Murdoch, Andrew McNeil, Haig Flashoff, Clive Alderton and John Walters. We have been able to enter four teams from Yr 3 – Yr 8 for this terms competition. Good luck everyone!

Air Conditioning

The air conditioning in classrooms is certainly being enjoyed by students and staff alike during these very warm days. Classroom environments are far more conducive to learning, particularly after the lunch break.

BACK TO SCHOOL STATIONERY FEEDBACK - return to school office

1. The new arrangements were very satisfactory and easy to use.

2. Or _____

_____ Date _____

DAD'S CLUB—Reply Slip Return to School Office.

I, or _____ am interested in taking part in the "Dad's Club", -
Uncle, Grand dad, Step Dad etc.

Name : _____

Phone _____

Community Support Group Sausage Sizzle Roster

Name : _____

I would like to add my name to the Sausage Sizzle Roster

Phone : _____

I would like to be on the Community Support Group Roster

Questions for Dinah Harvey—Maths Advisor—for Parents Evening :



Notice of Annual General Meeting (AGM)

Home & School Committee

Monday 13 February 2012

7.30 pm

St Mary's School Staff Room

901 Fredrick Street, Hastings

We invite you to attend and welcome any newcomers to our meetings and hope you can join us. Nominations for 2012 committee Office Holders are open, and if you wish to nominate or be nominated for a position please complete form below and return to School Office or Bernadette Lunny prior to commencement of AGM.

Nominee:

Nominated Position:

Nominated by:

Seconded by:

Please note you must obtain nominee's permission prior to nominating them.

Home & School Association

Optimist Yachting

Last week our senior students experienced the challenges of Optimist Yachting on the Pandora Pond in Napier. It was wonderful to see the development in confidence in each student. This is an amazing experience for all involved. A big THANK YOU to the wonderful parents who made their time available, enabling us to offer this opportunity to our students.

Senior team.

District Police Competency Test (PCT) competition

On Tuesday a team of seniors will be representing the school District Police Competency Test (PCT) competition.

This event is an obstacle course which involves going over, through, around and under things, dragging dummies, lifting things and running.

Senior Team

Healthy Wednesdays

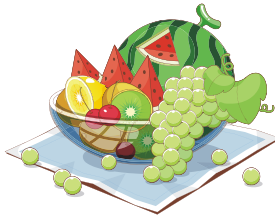
Remember we are trying to make Wednesday food at school healthy. We would like you to encourage your child to make this a day when they do not bring to school chips, cheezels, burger rings, dried noodles and such like packaged food. Children need to eat a lot of different food to stay healthy and to grow. Children need to choose a variety of food from the four food groups every day.

Vegetables and fruit

Bread and cereals

Lean meats, chicken, seafood, eggs and dried beans, peas and lentils, milk and milk products

Steph. Shaw, Junior Department



CAMP—AT ARATAKI— ROOM 6 & 7

(Error in Important Upcoming Events.)

Please note—

Yr 4 Children from R 7 and 6 are going on an overnight camp at Arataki followed by a day at Ocean Spa Napier, on Thursday 1 March and Friday 2nd March.

R9 are not involved in any camps this year.

SCHOOL ACCOUNT CHARGES

In March when the February invoice is issued, you will note the following charges on the children's accounts -

Religious Education photocopying	\$7
Photocopying	\$23
R.E. digital resource	\$12.
Camp fees Yr 4,5,6	